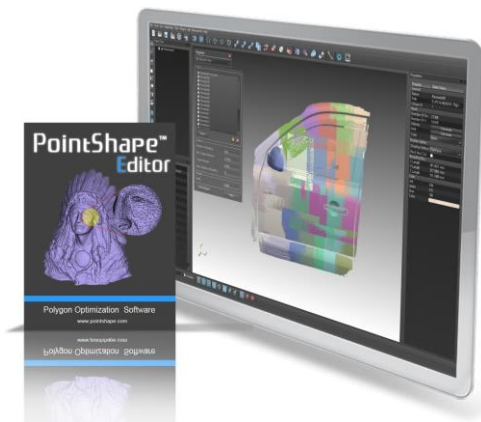


# PointShape™ Editor



3D Scan data Optimized Solution



## 3D Scan to 3D Printing Solution

### New Training Method for 3D Printing

Even beginners of 3D printers can easily create 3D printing data

### How to utilize 3D printing using 3D scanners

We will solve your concerns about using 3D scanners and 3D printers

[www.pointshape.com](http://www.pointshape.com)

T. +82 70 4366 4565

F. +82 31 713 8462

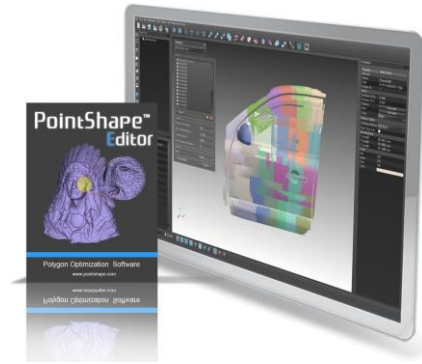
[pointshape@pointshape.com](mailto:pointshape@pointshape.com)





## PointShape™ Editor

The most efficient Scan Data Editing tool, PointShape Editor is the perfect software to optimize 3D scan data. Pointcloud and Polygon data can be edited with various powerful features of PointShape Editor.



## 3D Scan to 3D Printing Solution

### Objective

- Anyone can easily create 3D printing data by 3D scanning.
- Create 3D printing data without additional modeling training
- Customers with 3D printers and 3D scanners can use it without purchasing additional equipment.
- Create 3D printing data in one piece of software without using multiple software

### Benefit

- Create 3d printing data in various way.
- Present new training methods for 3D printing (accessories, souvenirs, etc.)
- Opportunities to experience a variety of creativity

### Workflows

#### Preparing

- Scanning Product



#### 3D Scanning

- 3D Scanner



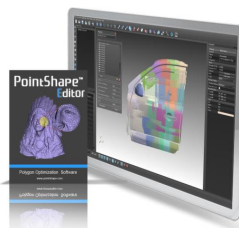
#### Editing Scan Data

- PointShape™ Editor



#### 3D Printing

- 3D Printer



# Example for 3D scan to 3D Printing

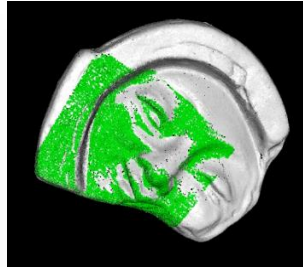
## 3D Scanning | PointShape™ Editor | 3D Printing

### 3D Scanning

- Scanning Product
- Data Acquisition
- Noise Delete
- **Estimated Time**  
- Within 1 hour



Prepare Product



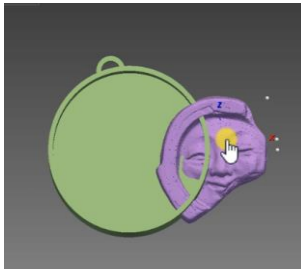
Scanning



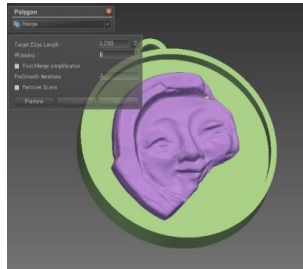
Complete Scanning

### PointShape™ Editor

- Edit Data
- Merge Data
- Create Data  
- 3D Printing Data
- **Estimated Time**  
- Within 1 hour



Scale & Transform



Merge Data



Create Data for 3D Printing

### 3D Printing

- 3D Printing  
- FDM, SLA, DLP & etc
- **Estimated Time**  
- Within 2 hour

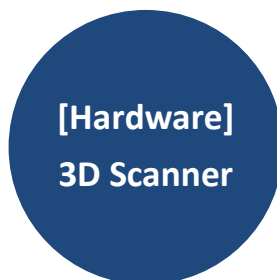


3D Printing



Compare (Real Product Vs. 3D Printing)

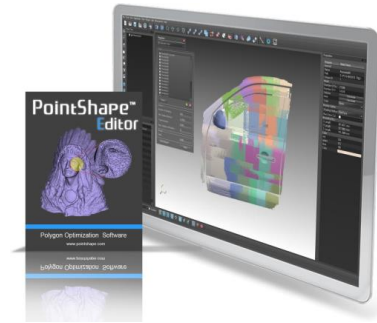
## 3D Package Solution



# PointShape™ Editor

## Key Features

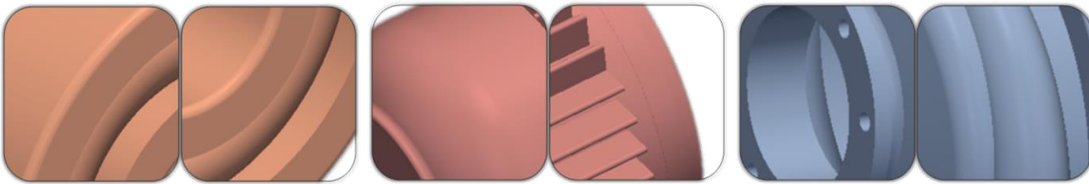
- Easy to use and Affordable Data Editing Solution
- Create Optimized Mesh for 3D Printing (Tessellation)
- Polygon Data Healing (Repair)
- Polygon Data Processing
- Point Data Editing
- Scan Wizard



## Create Optimized Mesh for 3D Printing

PointShape™ Editor enables to create the most optimized mesh data from all major CAD formats for 3D printing. The data exported from PointShape™ Editor will support the best quality of 3D printing.

### Tessellation Exported Data from PointShape™



### Data exported from Common CAD



Function	
<b>CAD Importing</b>	CATIA, SOLIDWORKS, SIEMENS NX, SOLID EDGE, INVENTOR, PTC CREO, PARA SOLIDSTP, STEP, IGES & NATIVE 3D CAD FORMAT
<b>Scan Data Importing</b>	STL, OBJ, PLY, DXF, PCD, LAS, LAZ, PTX, TXT, ASC, NEW, XYZ, PTS, CSV, AC
<b>Tessellation</b>	Create the most optimized mesh data from all major CAD formats for 3D printing. The data exported from PointShape™ Editor will support the best quality of 3D printing
<b>Polygon Processing</b>	Smooth, Decimate, Subdivide, Merge, Fill Hole, Remove Marker, Scale
<b>Point Editing</b>	Register(Manual / Auto), Noise Delete, Noise Filtering, Sampling, Triangulation
<b>Polygon Healing(Repair )</b>	Non-manifold Face, Dangling Poly-Face, Small Cluster, Folded Poly-Face <b>STL file Validation</b>



#610, SEONGNAM-DAERO 69, BUNDANG-GU,  
SEONGNAM-SI, GYEONGGI-DO, REPUBLIC OF KOREA (13636)  
Tel: +82 70 4366 4565, Fax: +82-31-713-8462  
E-mail : pointshape@pointshape.com